



# Welcome to Extended Stay America Select Suites

## Segment

Economy Extended Stay

## Target guests

Long-term, 30+ nights including essential workers & travelers in transition

## Key Amenities & services

Full kitchens, on-site guest laundry, bi-weekly housekeeping, no 24/7 front desk service, no breakfast

## Inspired to drive revenue and operational efficiencies



### Specialized support from construction professionals

Our experienced team provides guidance on navigating the general contractor landscape, scheduling and building development.



### Thoughtful design

Maximizing rentable area with 73% of revenue-generating square footage.



### Cost efficiencies

Minimal public space dimensions, with no breakfast space.



### Flexible floor plan

Capacity for up to 52 Double Queen rooms, plus the option for a fitness center based on market demand.

# Site Plan

## Hotel Specifications

123 rooms

4 floors

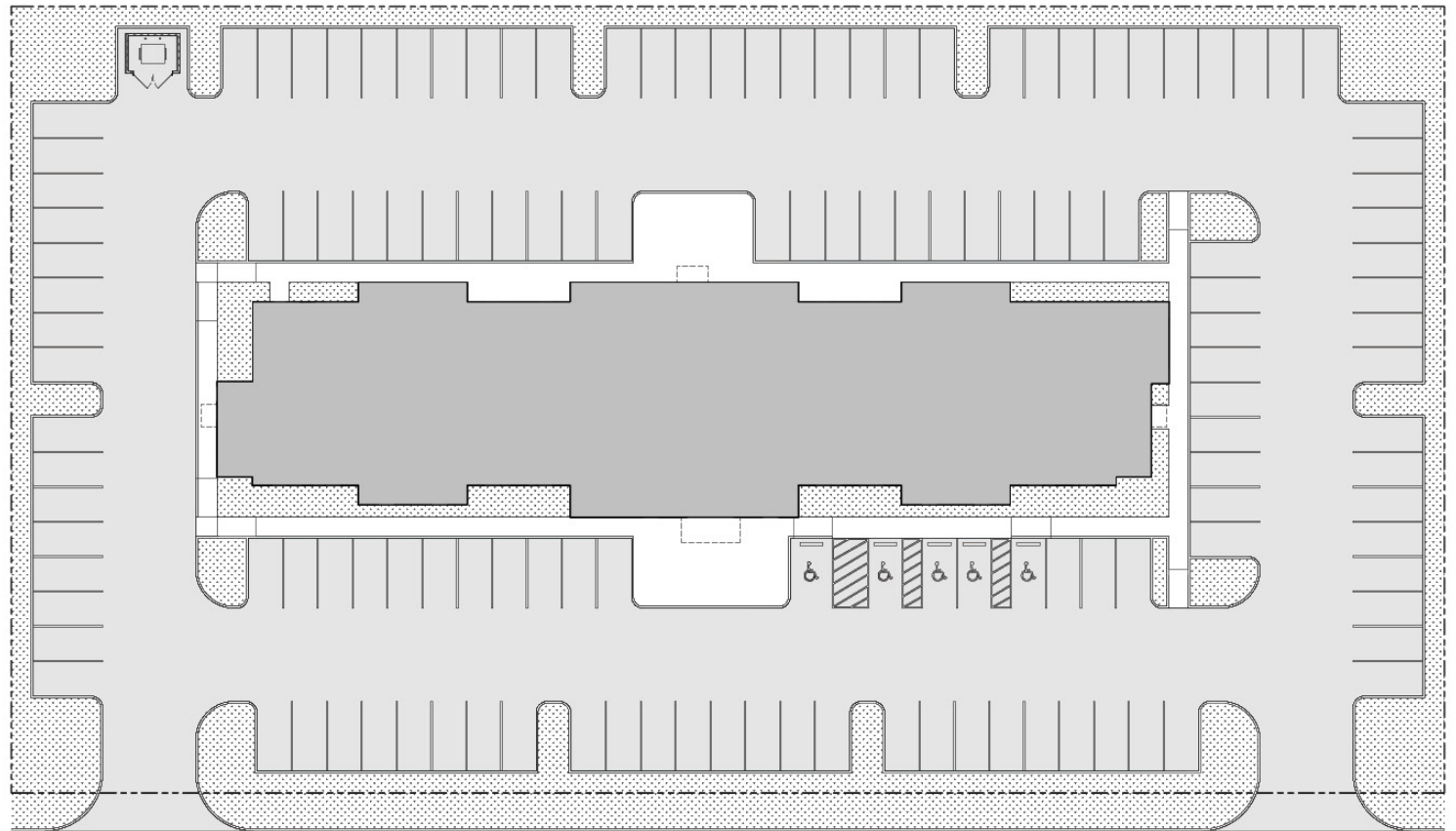
50,160 sq. ft.

Building Length: 246'

Building Depth: 61'

## Land Area

1.75 acres





# Floor Plan






## Floor 1



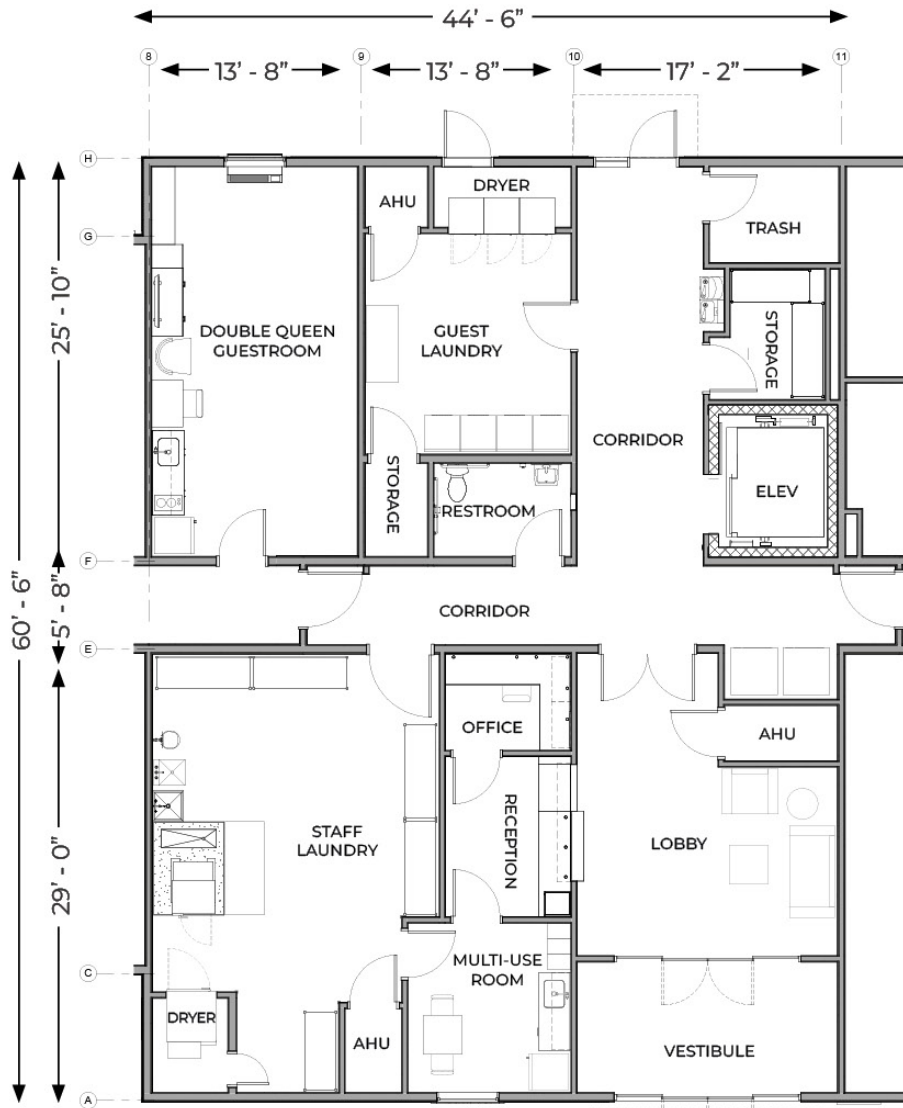
**73%**  
REVENUE  
GENERATING  
SQUARE  
FOOTAGE

## Floor 2, 3, and 4

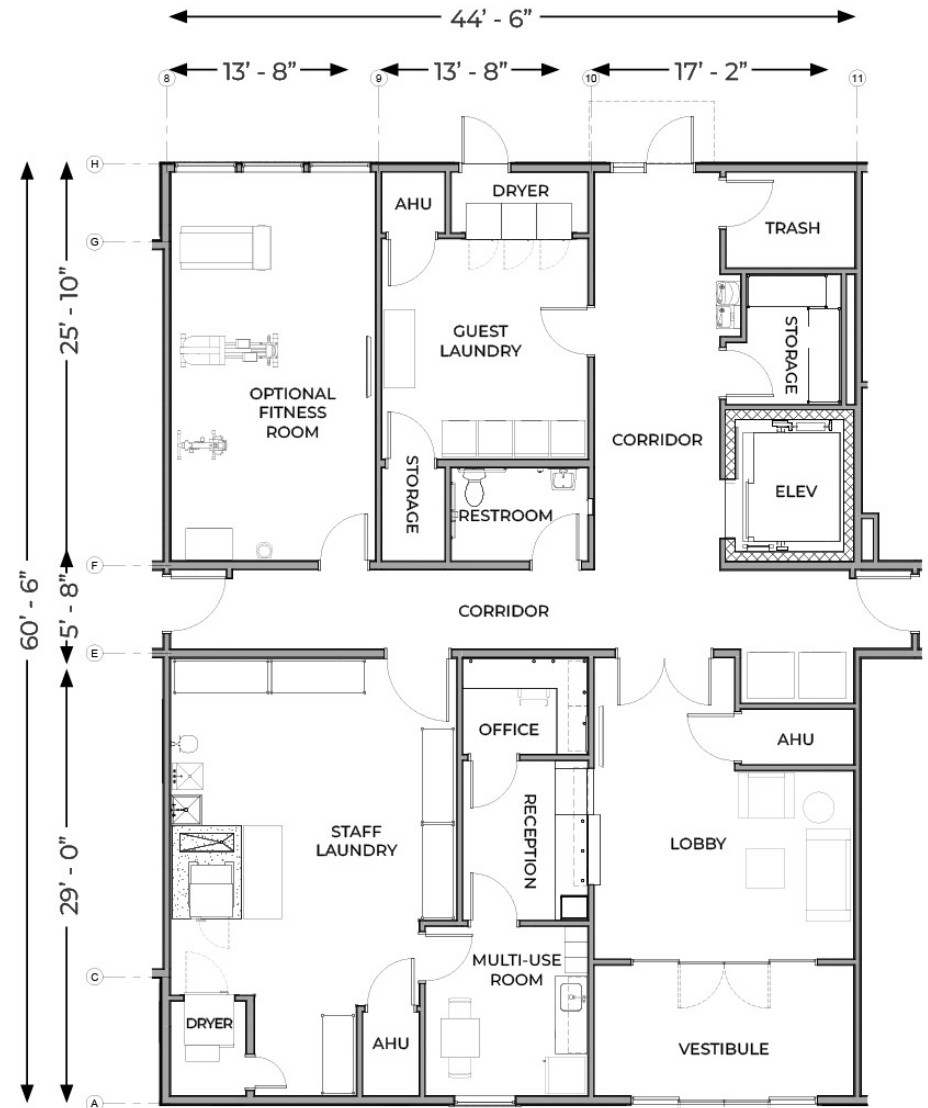


-  Business Occupancy
-  Single Queen
-  Double Queen
-  Incidental Use
-  Circulation

# Public Space



Without fitness center



Optional: with fitness center

## Guest Room Mix

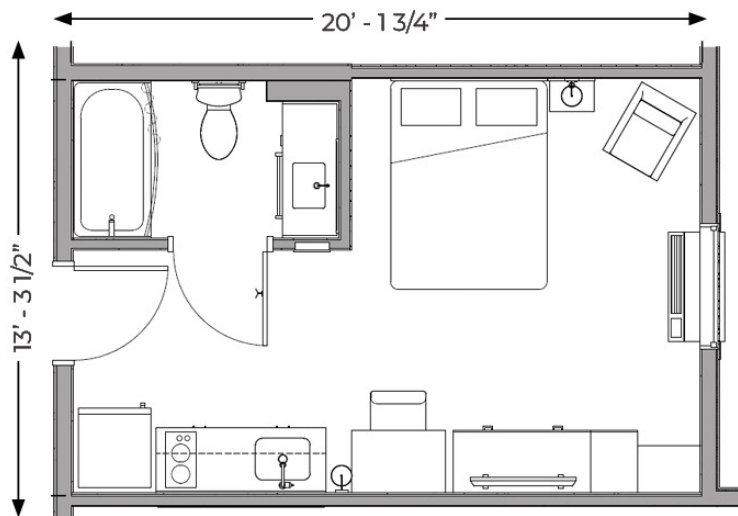
Guest Room Mix (without fitness center)	
Queen	71
Double Queen	39
Double Queen Deluxe	13
<b>Total</b>	<b>123</b>

Guest Room Mix (with fitness center)	
Queen	71
Double Queen	38
Double Queen Deluxe	13
<b>Total</b>	<b>122</b>

## Room Layouts

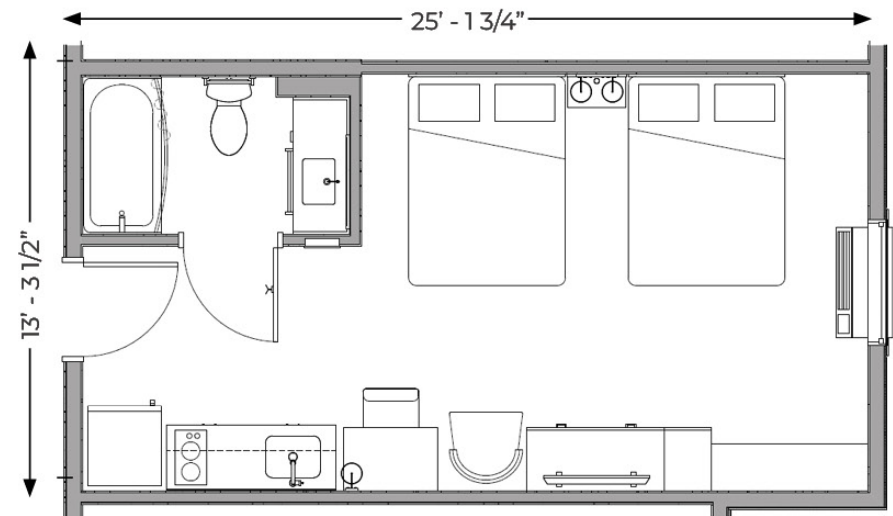
### Single Queen

263 sq. ft.



### Double Queen

329 sq. ft. (Deluxe - 372 sq. ft. and includes a recliner)



# Elevations

## Front Elevation



BUILDING HEIGHT  
45' - 6"  
TRUSS BEARING  
36' - 6 3/4"

## Rear Elevation



BUILDING HEIGHT  
45' - 6"  
TRUSS BEARING  
36' - 6 3/4"

## Left Elevation



BUILDING HEIGHT  
45' - 6"  
TRUSS BEARING  
36' - 6 3/4"

## Right Elevation



BUILDING HEIGHT  
45' - 6"  
TRUSS BEARING  
36' - 6 3/4"



## Franchise with the proven leader in extended stay



[franchise.esa.com](https://franchise.esa.com)



[franchise@esa.com](mailto:franchise@esa.com)



**(844) 542-4148**

This information is not intended as an offer to sell or the solicitation of an offer to buy a franchise. It is for information purposes only. The offering is by prospectus only. Currently, the following states regulate the offer and sale of franchises: CA, HI, IL, IN, MD, MI, MN (File No. F-10521), NY, ND, RI, SD, VA, WA and WI. If you are a resident of or want to locate a franchise in one of these states, we will not offer you a franchise unless and until we have complied with applicable pre-sale registration (or obtained an applicable exemption from registration) and disclosure requirements in your state. CA: THESE FRANCHISES HAVE BEEN REGISTERED (OR EXEMPTED FROM REGISTRATION) UNDER THE FRANCHISE INVESTMENT LAW OF THE STATE OF CALIFORNIA. SUCH REGISTRATION DOES NOT CONSTITUTE APPROVAL, RECOMMENDATION, OR ENDORSEMENT BY THE COMMISSIONER OF FINANCIAL PROTECTION AND INNOVATION NOR A FINDING BY THE COMMISSIONER THAT THE INFORMATION PROVIDED HEREIN IS TRUE, COMPLETE, AND NOT MISLEADING. NY: THIS ADVERTISEMENT IS NOT AN OFFERING. AN OFFERING CAN ONLY BE MADE BY A PROSPECTUS FILED FIRST WITH THE DEPARTMENT OF LAW OF THE STATE OF NEW YORK. SUCH FILING DOES NOT CONSTITUTE APPROVAL BY THE DEPARTMENT OF LAW.